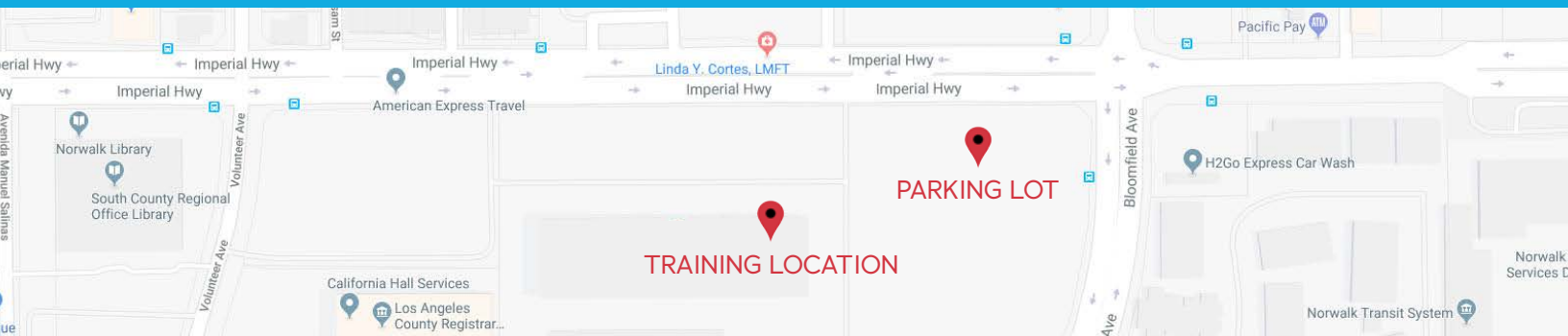


BLUE LIGHT IBM® I2® ANALYST'S NOTEBOOK COURSE

NORWALK, CA - APRIL 1-5, 2019

12440 E. IMPERIAL HWY, STE 700 - NORWALK, CA 90650



Blue Light IBM® i2® Analyst's Notebook (ANB) training courses are suitable for any industry. Our courses offer an overview of the latest version of ANB, including coverage of unstructured data and social media connectors and Blue Fusion.

5-DAY IBM® I2® ANALYST NOTEBOOK COMPLETE COURSE - WITH ADVANCED & BASIC COURSES OPTIONS

APRIL 1-5
ANALYST NOTEBOOK COMPLETE
5-DAY INSTRUCTOR-LED COURSE
THE COST FOR THIS CLASS IS \$2,000

APRIL 1-3
ANALYST NOTEBOOK BASIC
3-DAY INSTRUCTOR-LED COURSE
THE COST FOR THIS CLASS IS \$1,400

APRIL 4-5
ANALYST NOTEBOOK ADVANCED
2-DAY INSTRUCTOR-LED COURSE
THE COST FOR THIS CLASS IS \$800

☆ 40 CPE CREDITS

☆ 20 CPE CREDITS

☆ 15 CPE CREDITS

COURSE DESCRIPTION

This course is specifically designed for the individual who has the requirement to have a complete and full understanding of the features of IBM® i2® Analyst's Notebook.

Our course teaches students to master the program's analytical capabilities and integrate geospatial analysis into their products, focusing on educating the analyst on how to achieve the results they are wanting as their end statement as an analyst.

During all courses students are asked and encouraged if possible to bring in sample data, they would normally work with in their daily duties, The Instructor will then work with the students to achieve the best practices in their work flow in bringing the data into i2® Analyst's Notebook than to sort through and conduct Analysis on the data.

All Blue Light Instructors hold a Secret to Top Secret Clearance.

Please contact our Sales Team at sales@bluelightllc.com with any question or to book your training.

TRAINING THAT WORKS

TAUGHT BY THE i2® EXPERTS

SCHEDULE YOUR NEXT TRAINING WITH BLUE LIGHT

THE INDUSTRY-LEADING PROVIDER OF IBM® i2® TRAINING

We are a strategic IBM® Silver Business Partner specializing in information analysis and data analytics, with over a decade of experience around the world. Blue Light offers industry-recognized training on the complete IBM® i2® software suite.

THE BLUE LIGHT DIFFERENCE



MULTI-INDUSTRY EXPERTISE

Blue Light has provided training to analysts across the globe from multiple industries including defense, banking, healthcare, loss prevention, fraud, law enforcement, intelligence, consumer protection, cybersecurity, and other commercial and private industries.



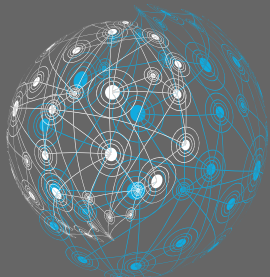
CPE CREDITS

Blue Light is the only IBM® i2® training partner awarding students CPE Credits upon successful completion of our Training Programs.



CUSTOMER FOCUSED TRAINING

Our training is focused on “Methodology not Buttonology™,” tailoring classes to the level of student expertise, as well as each customer’s mission. This approach ensures that our customers maximize the benefits of their analytical products and achieve organizational objectives.



BLUE FUSION

For IBM® i2® Analyst’s Notebook

Experience the POWER of i2®

Blue Light Blue Fusion™ is the first analytical support solution plug-in for Analyst’s Notebook. Blue Fusion’s Relational Database Management System (RDBMS) will help your team be up and running, connecting to and importing data, in hours versus weeks.